

A first in kind  
exhibition platform  
on the future of health and care



**health**  
**house**

EXPERIENCE THE FUTURE

# Health House

- De toenemende impact van technologie tonen op de toekomst van gezondheid en zorg
- Innovatief zijn in wat we tonen maar ook in de manier waarop we dat doen
- Een unieke facilitator zijn voor het Vlaamse innovatie ecosysteem



# FOUNDING PARTNERS



UZ  
LEUVEN

mec

KU LEUVEN



LEUVEN

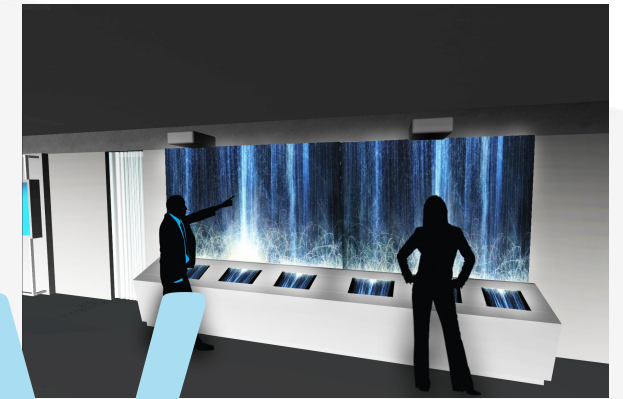
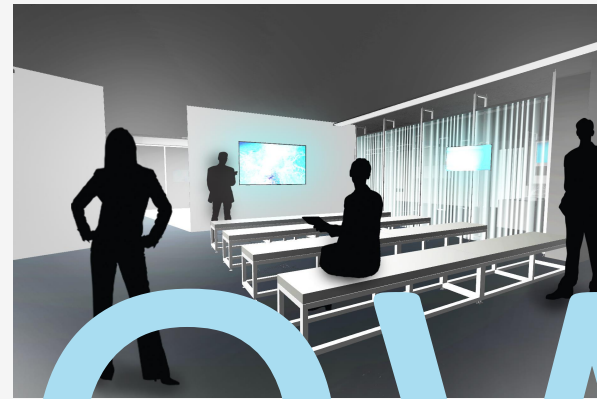
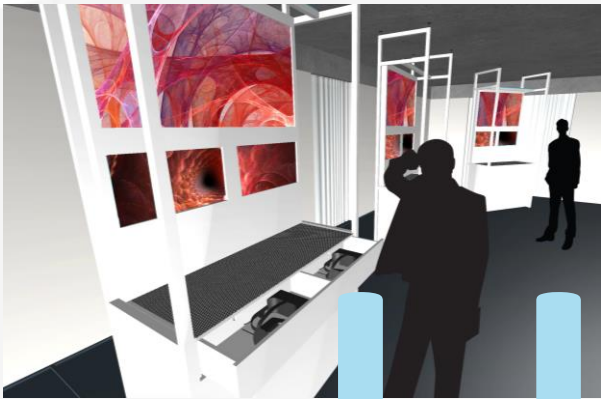
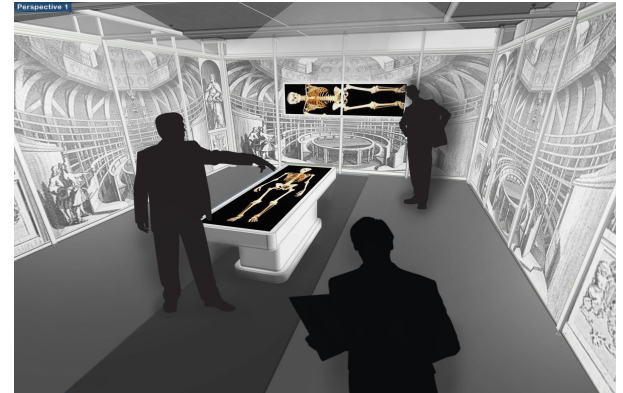
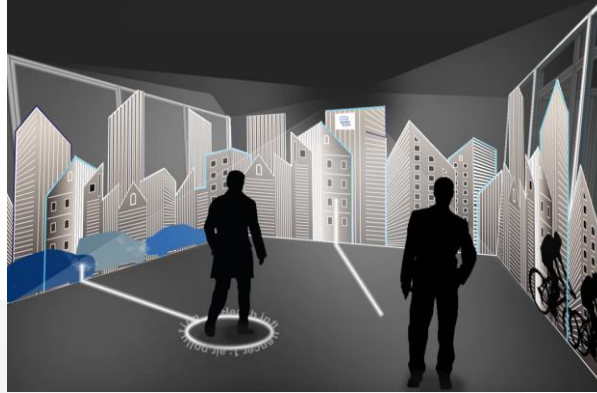
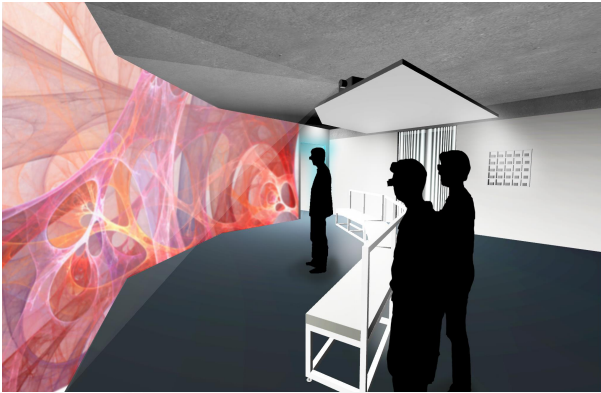
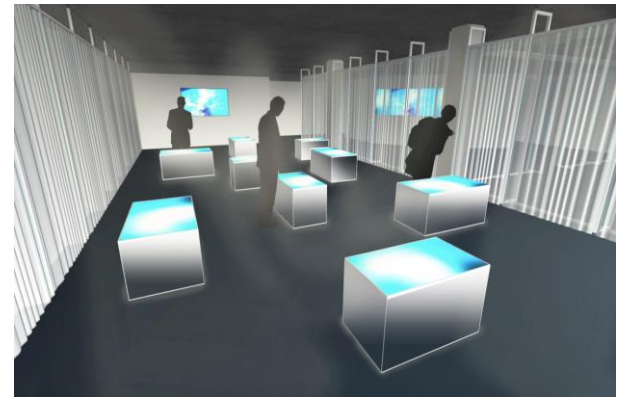
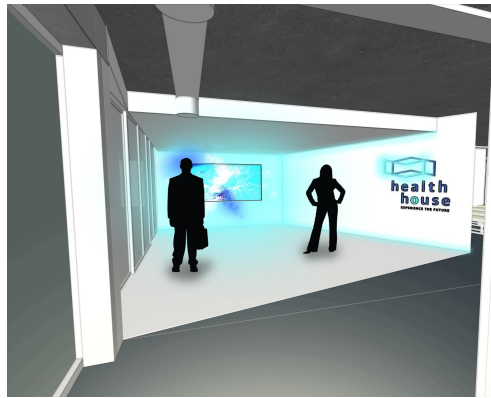


VLAAMS  
BRABANT



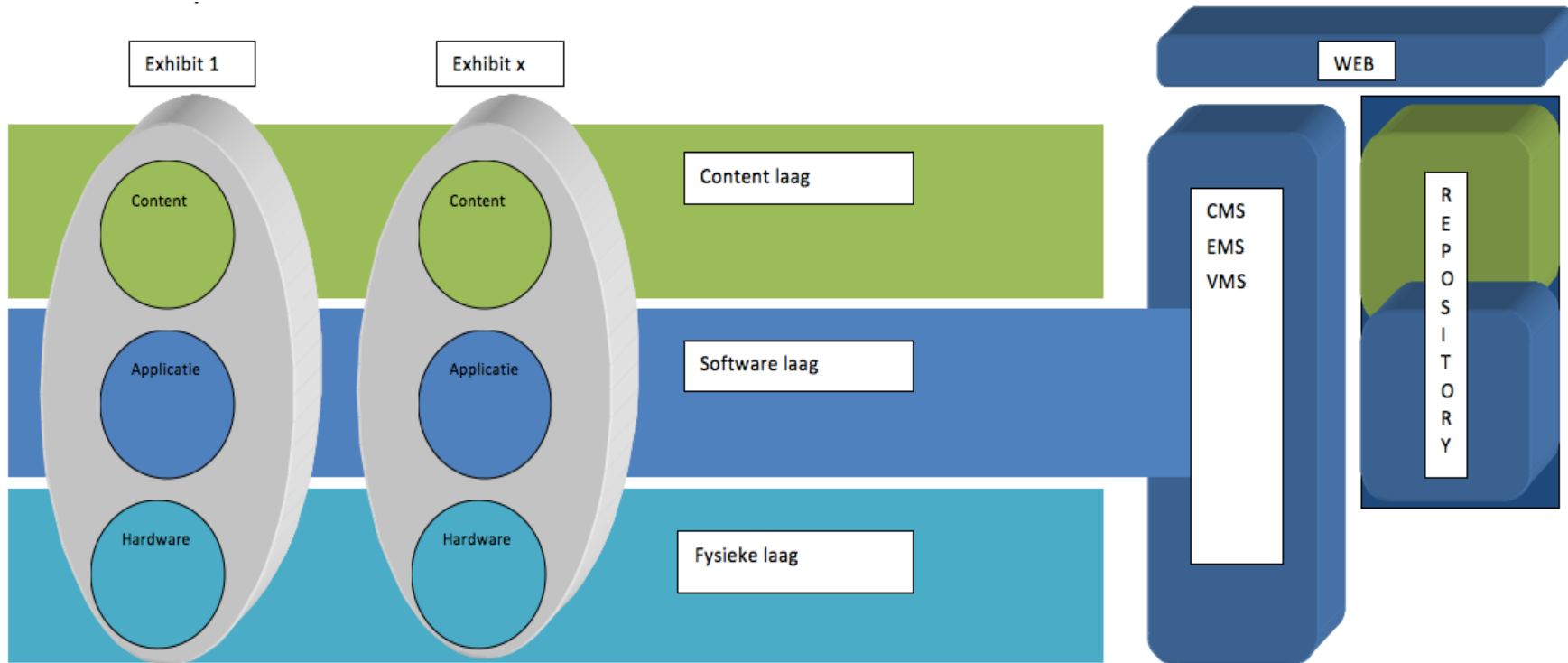


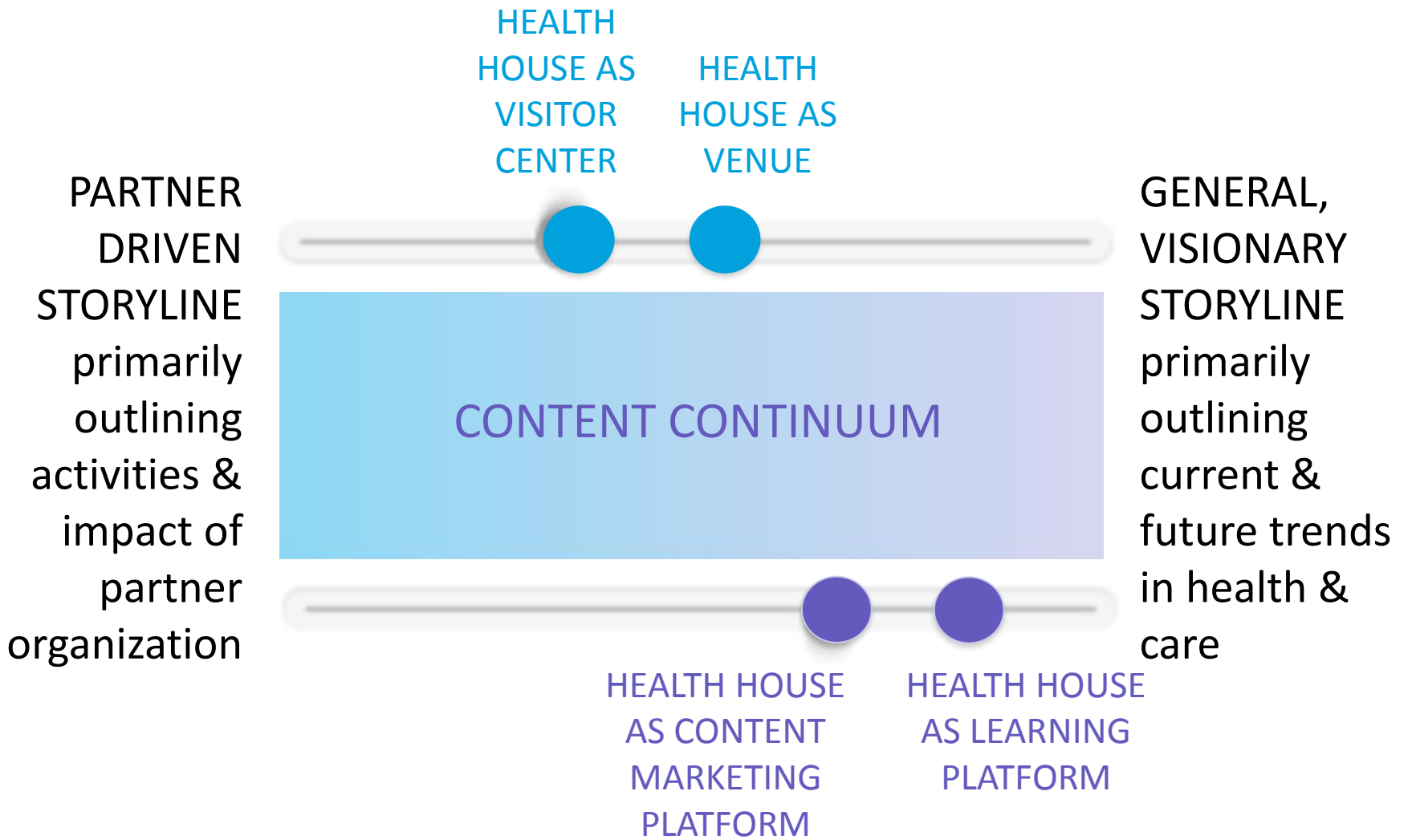
NOT HOW



# HOW

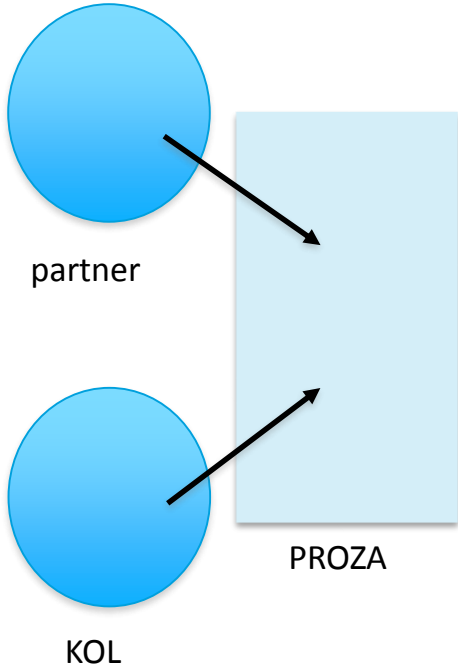
A powerful content | exhibition | visitor management system renders the exhibition platform truly 'programmable'





WHAT





Overall script

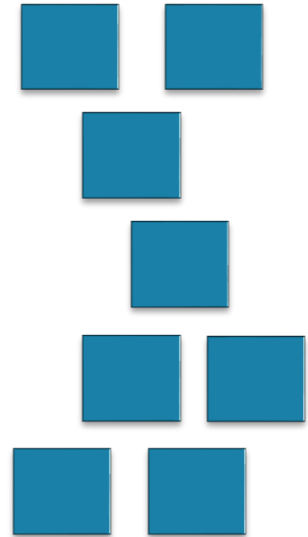


Subscripts

...



Pool van freelance scenario writers



Digitale productie contractor network





A 3D illustration featuring a blue human figure standing on a blue puzzle piece. The figure is stylized with a circular head and a rectangular body. The puzzle piece it stands on is a large, central piece with a notch on the left and a bump on the right. Surrounding this central piece are several other puzzle pieces, some of which are slightly out of focus, creating a sense of depth. The background is a light, textured surface, possibly representing a puzzle board. The overall composition suggests themes of human impact, problem-solving, or integration in a business context.

B2B2X

WHO

## PUBLIEKE SECTOR

- SOC's
- Hospital(network)s
- Universities, UC's, management schools
- Foreign top tech TTO's
- Flemish, Federal, EU government agencies
- FIT
- ...

## PRIVATE SECTOR

- Pharma companies
- Technology companies
- Medical event agencies
- Banking & insurance
- Trend & mktng agencies
- Portfolio companies
- Consultancy firms
- Every thinkable vertical
- ...

## KOEPEL ORGS

- LOK's
- Patient organizations
- Startup/KMO support initiatives
- Industry associations
- General business networks
- Health & Tech networks
- ...



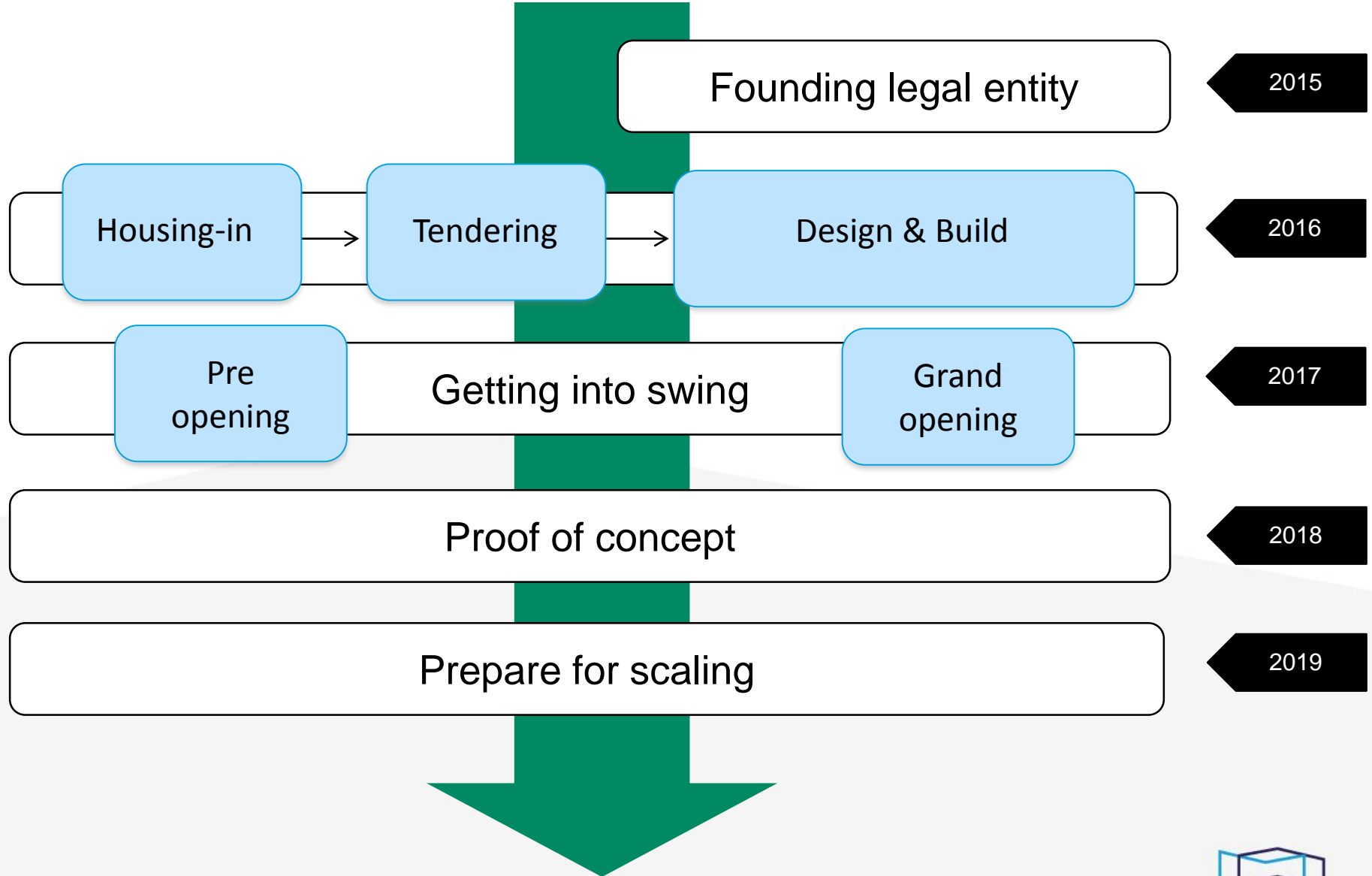
# A first-in-kind exhibition platform on the future of health & care



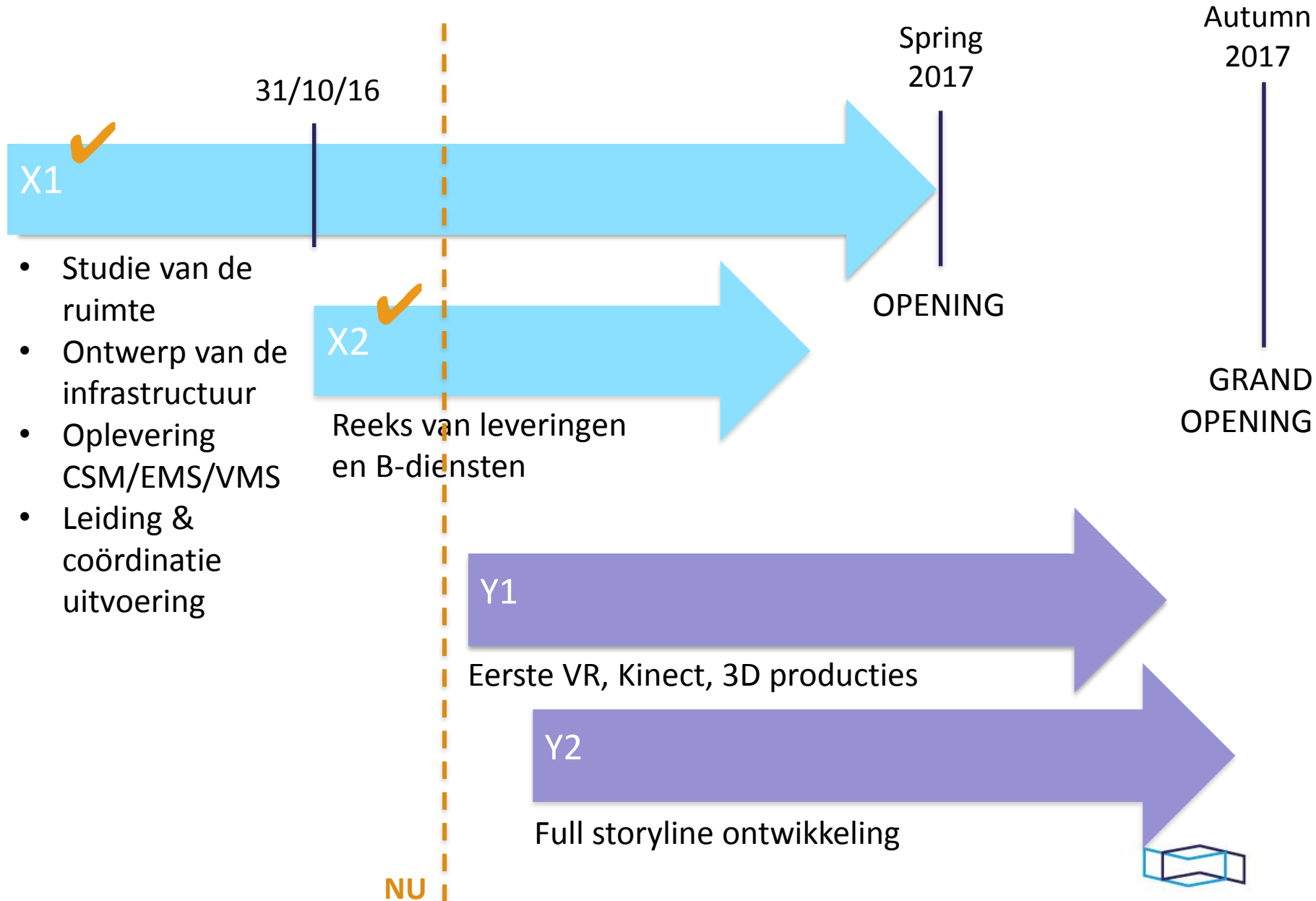
- Allowing **flexible** programming of **tailored** exhibitions
- Featuring class-leading **content** & astonishing **visualizations**
- Enabling **organizational** and **thematic** storytelling > dissemination > interaction
- Creating cross-domain **synergies** between health, technology & creativity



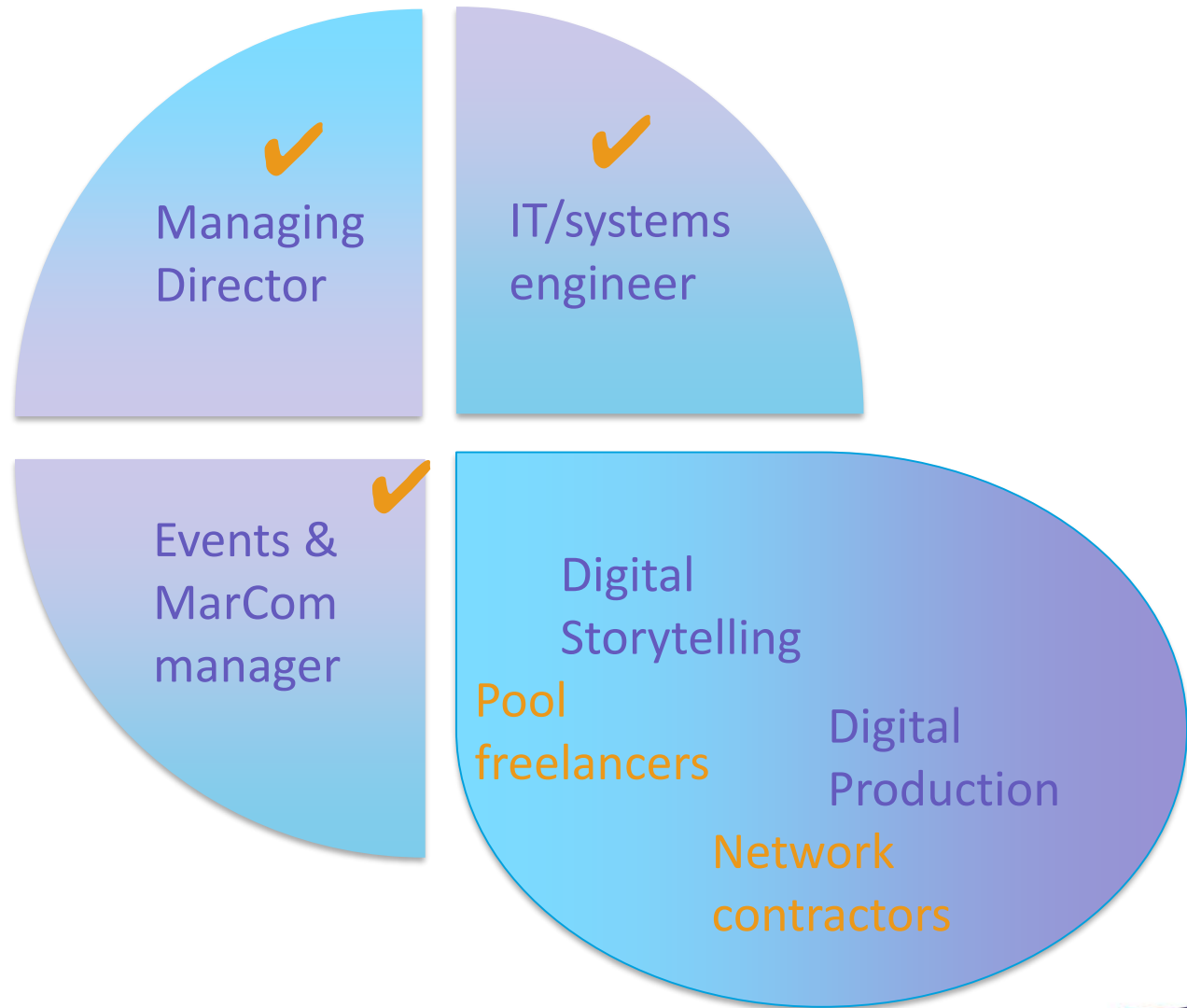
# TIMELINE



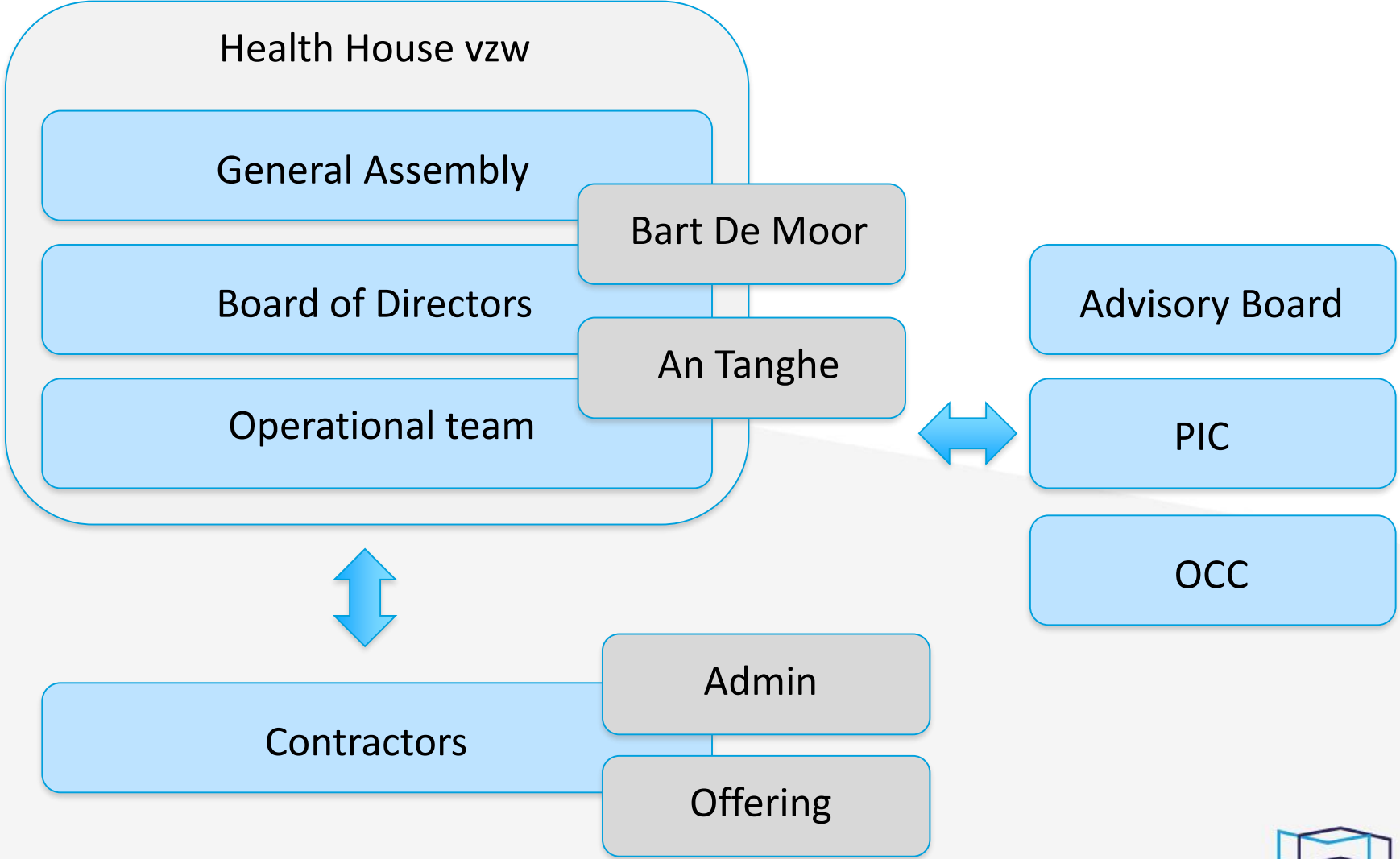
# DESIGN & BUILD



# TEAM



# GOVERNANCE



# LOCATION



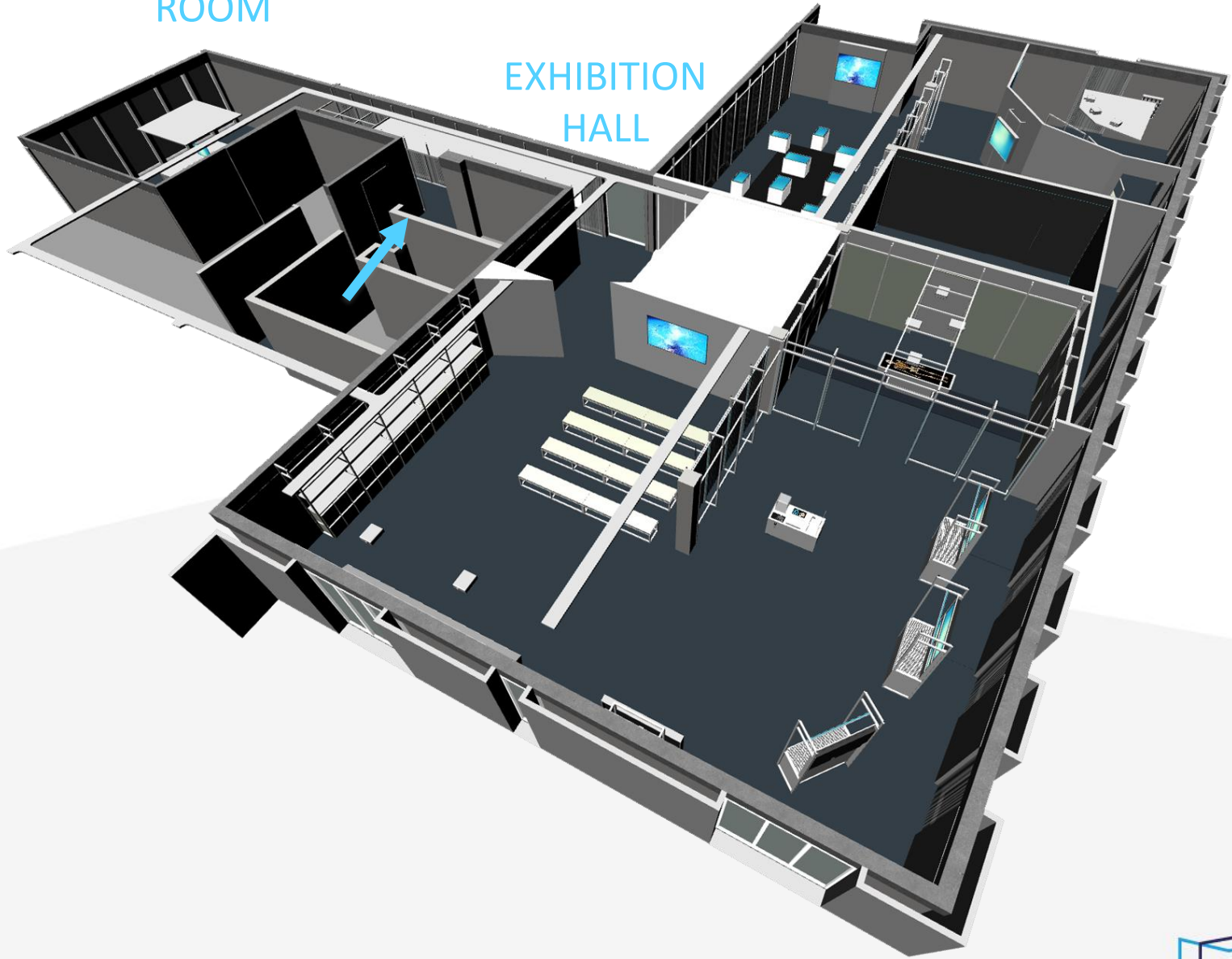


# WALK THROUGH



DEMO  
ROOM

EXHIBITION  
HALL



WALK THROUGH







The Tunnel

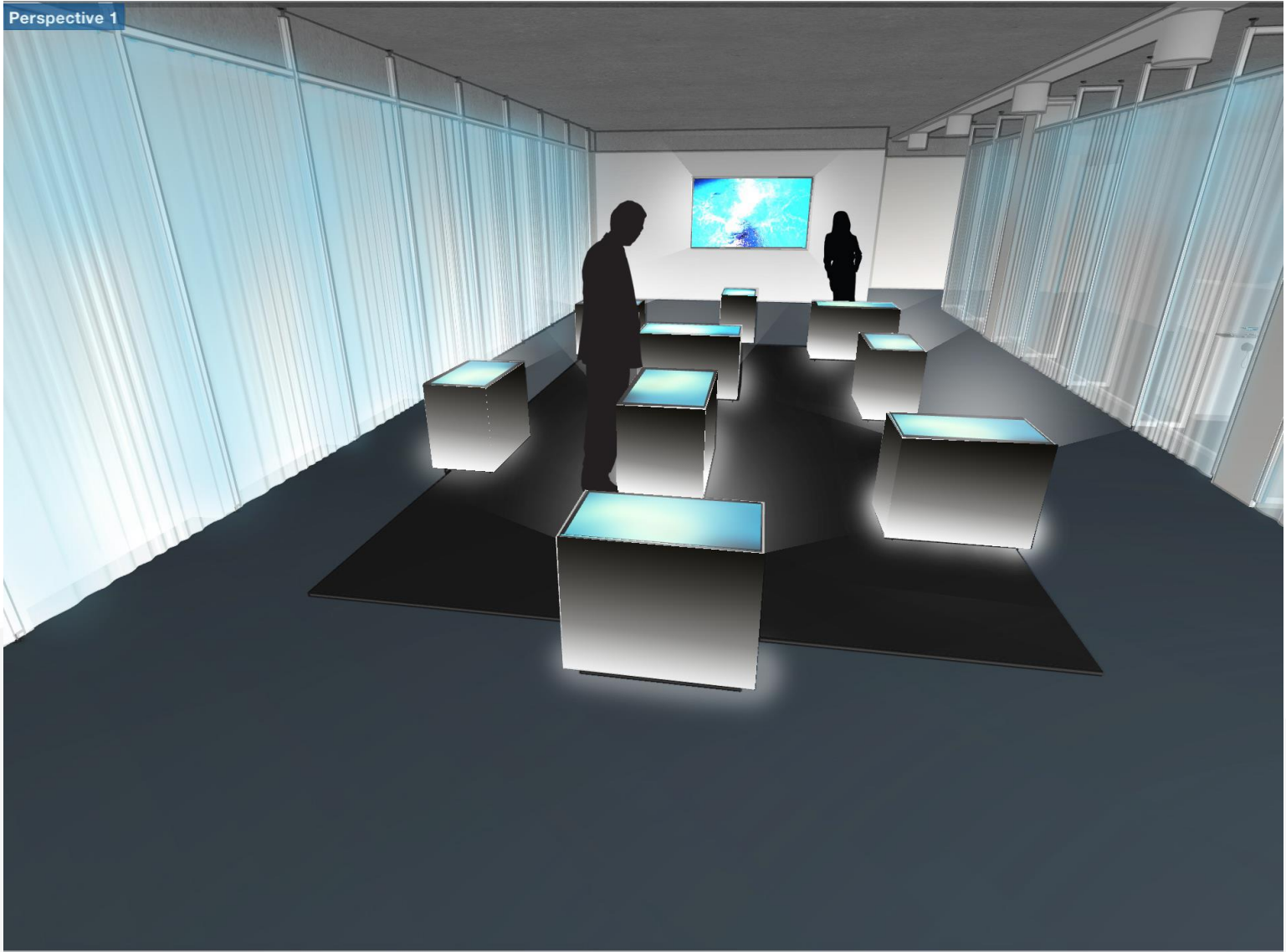




The Gateway



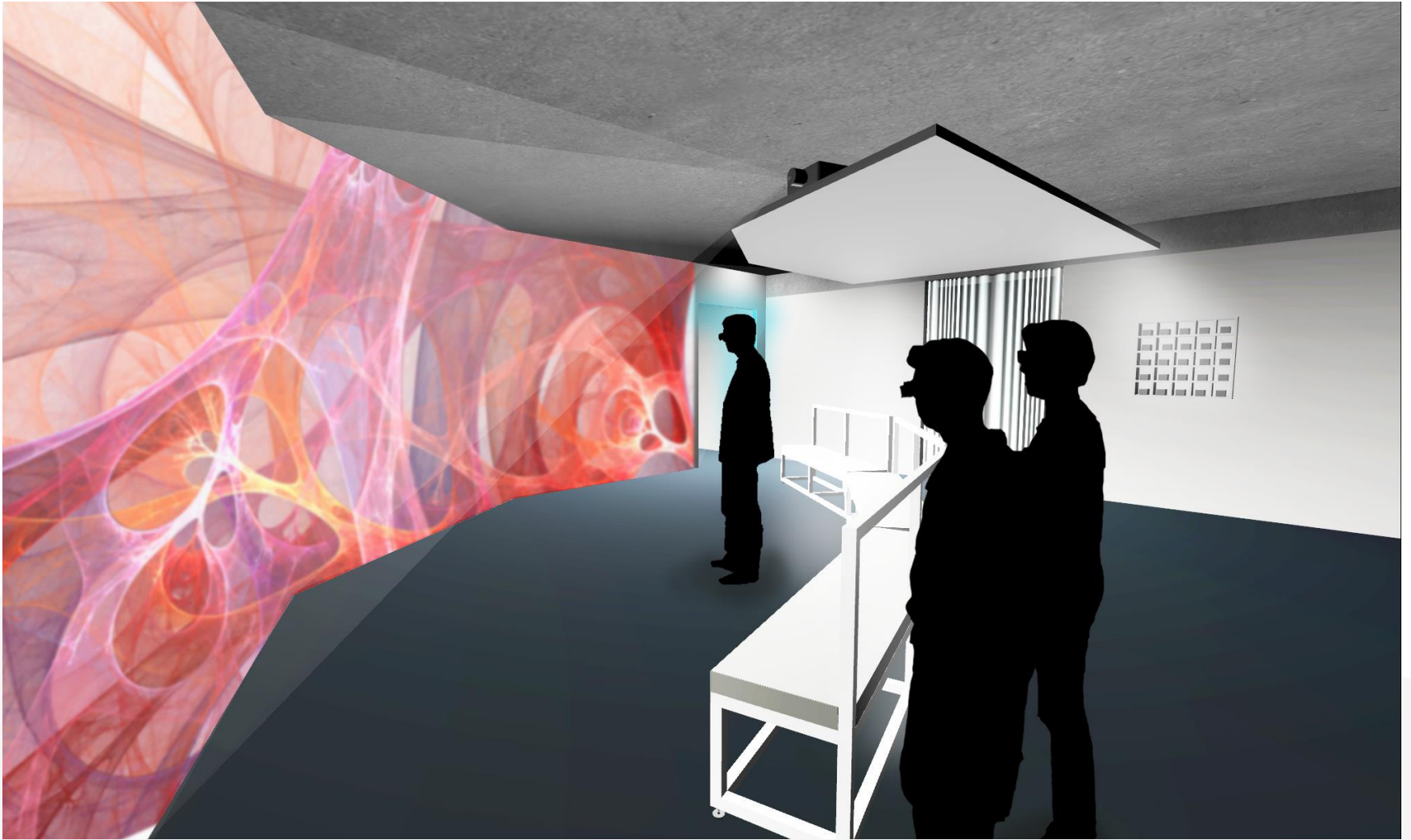
Perspective 1



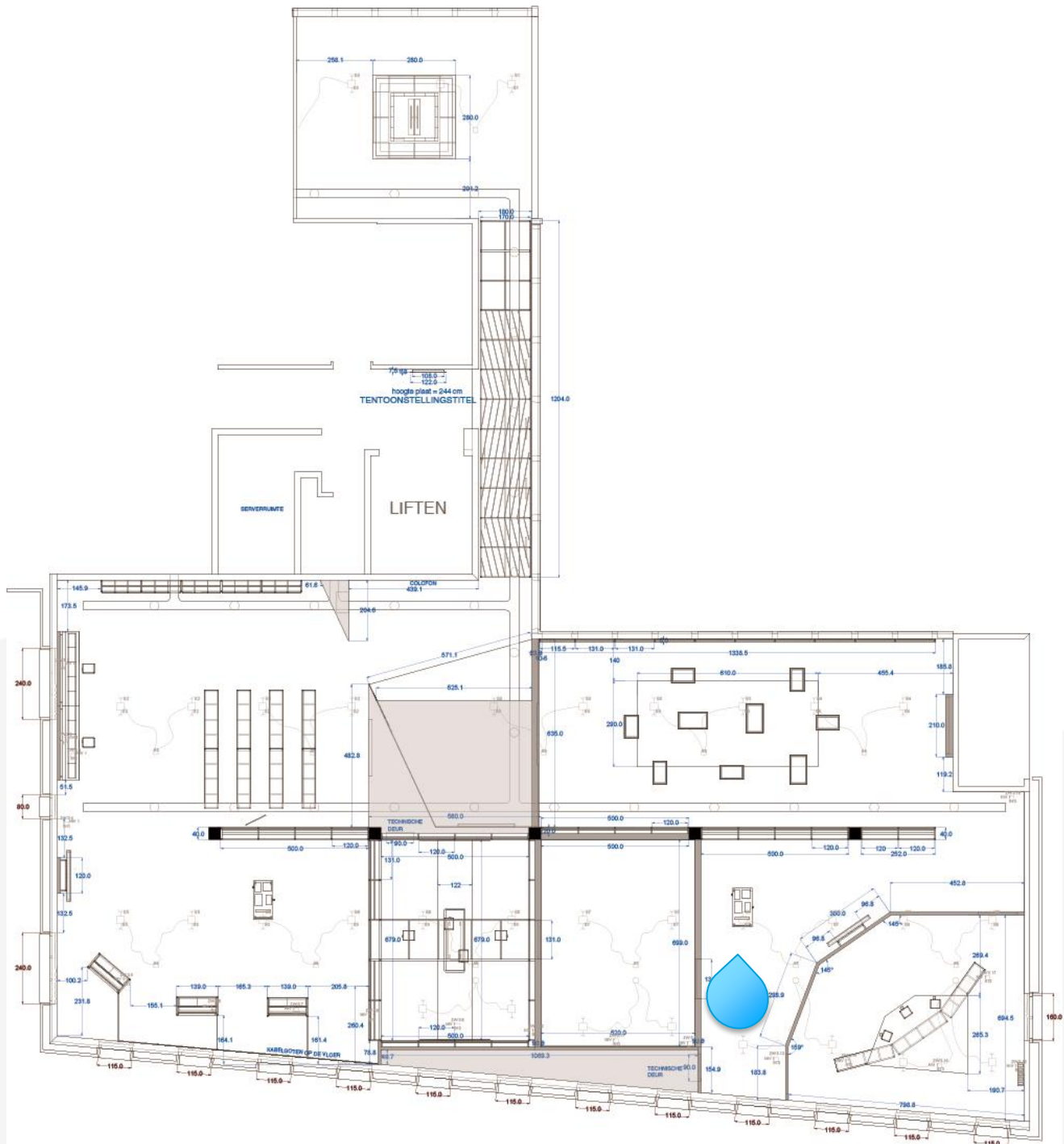
# The Labyrinth

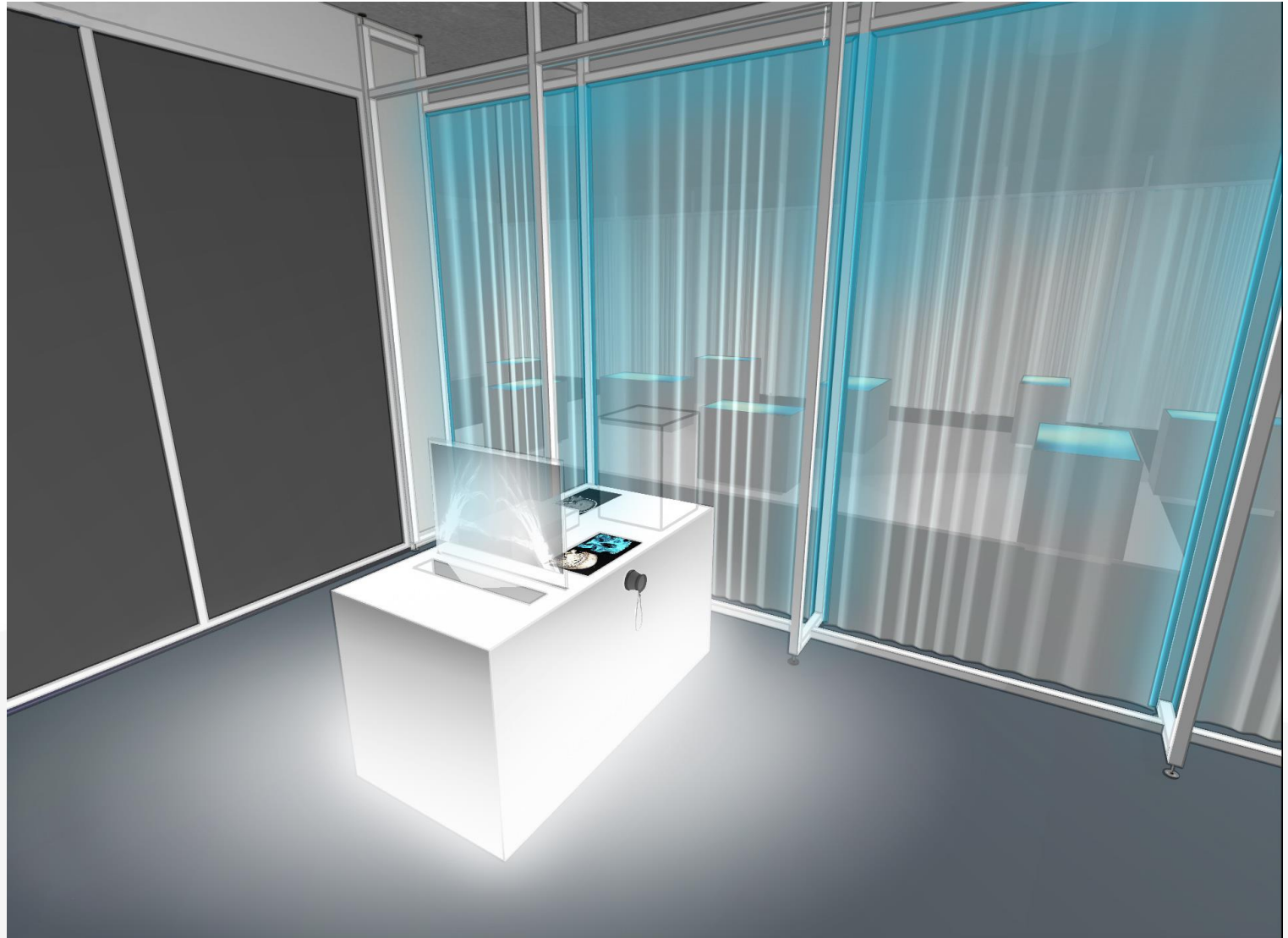






The Cave





The Artefactum I & II



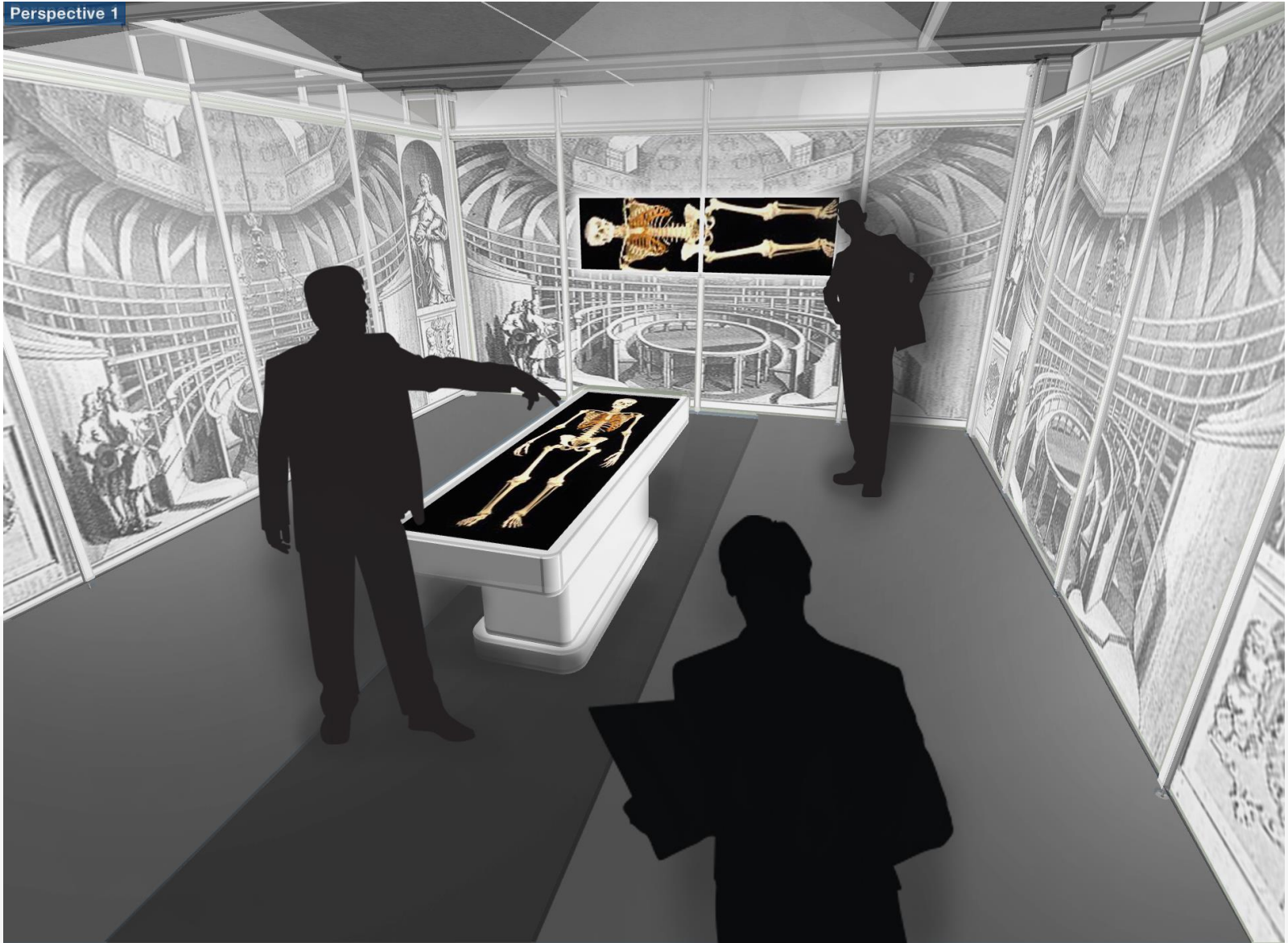
Perspective 1



# The Interactum



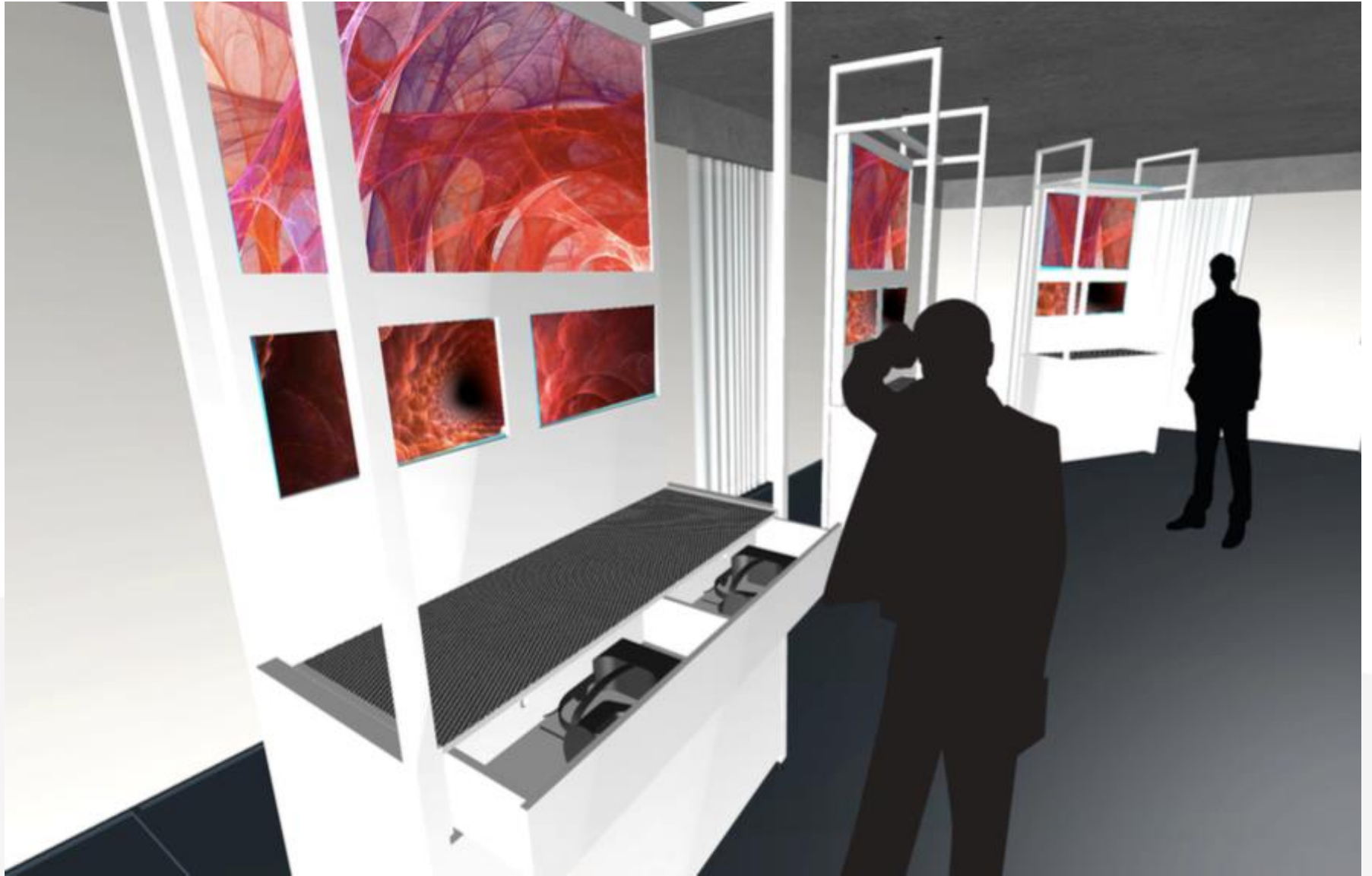
Perspective 1



# The Corpus

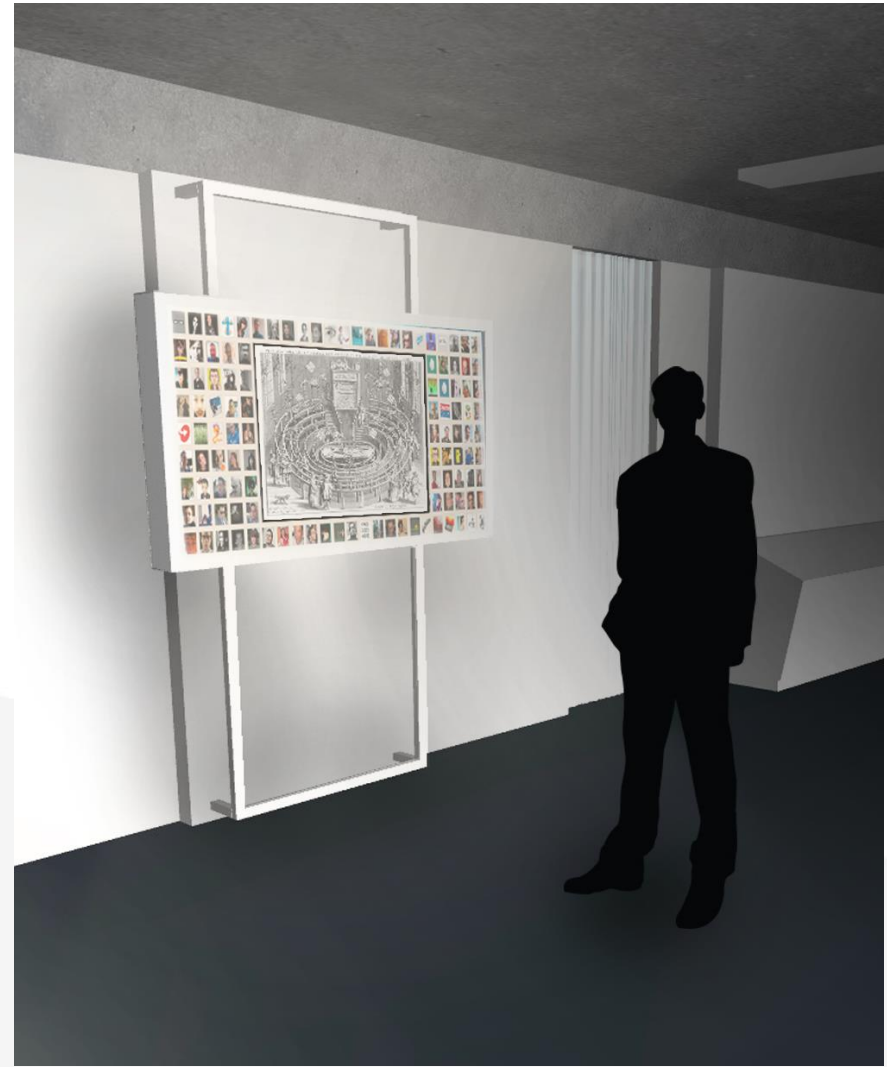






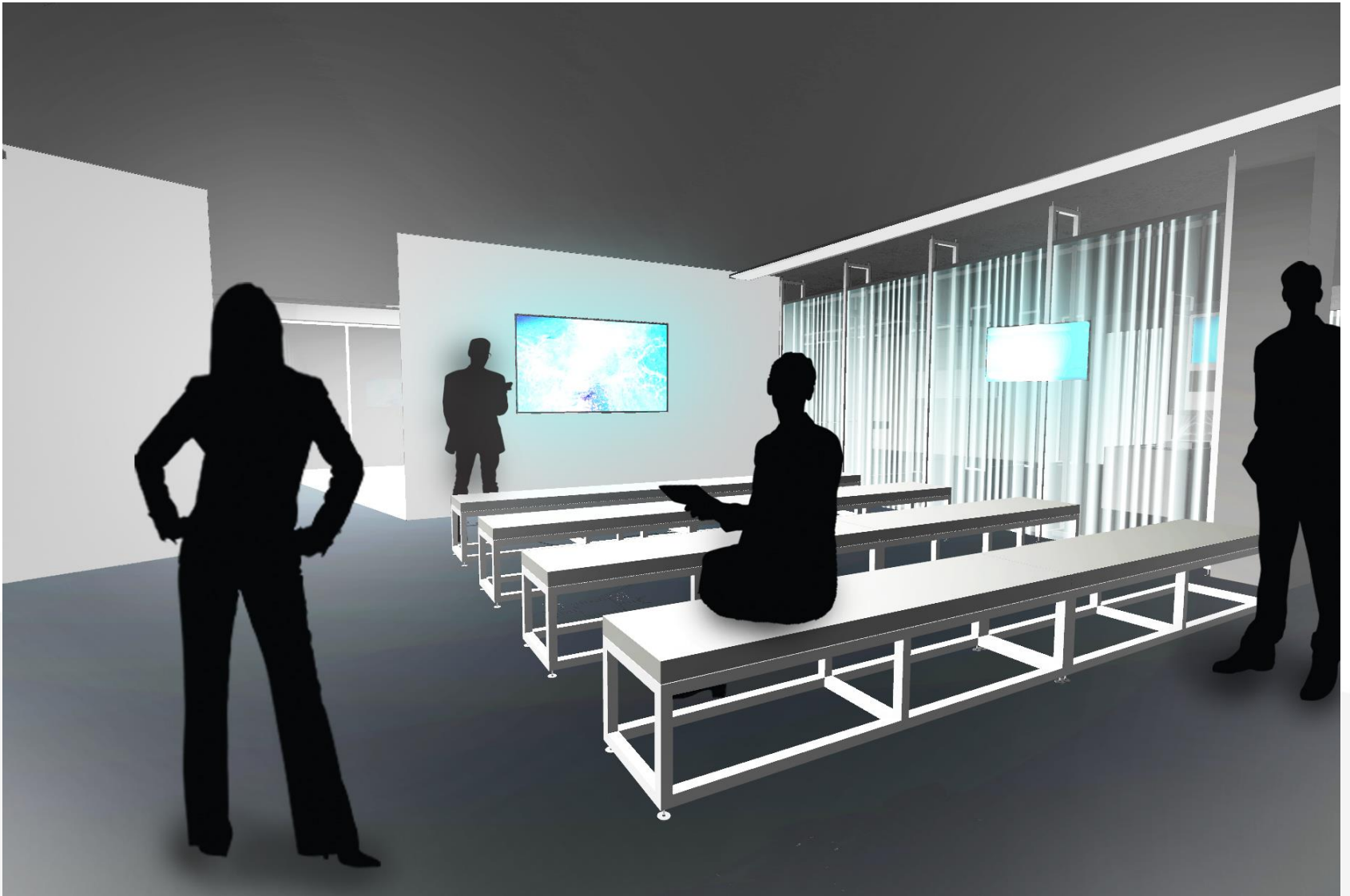
The Visionarium



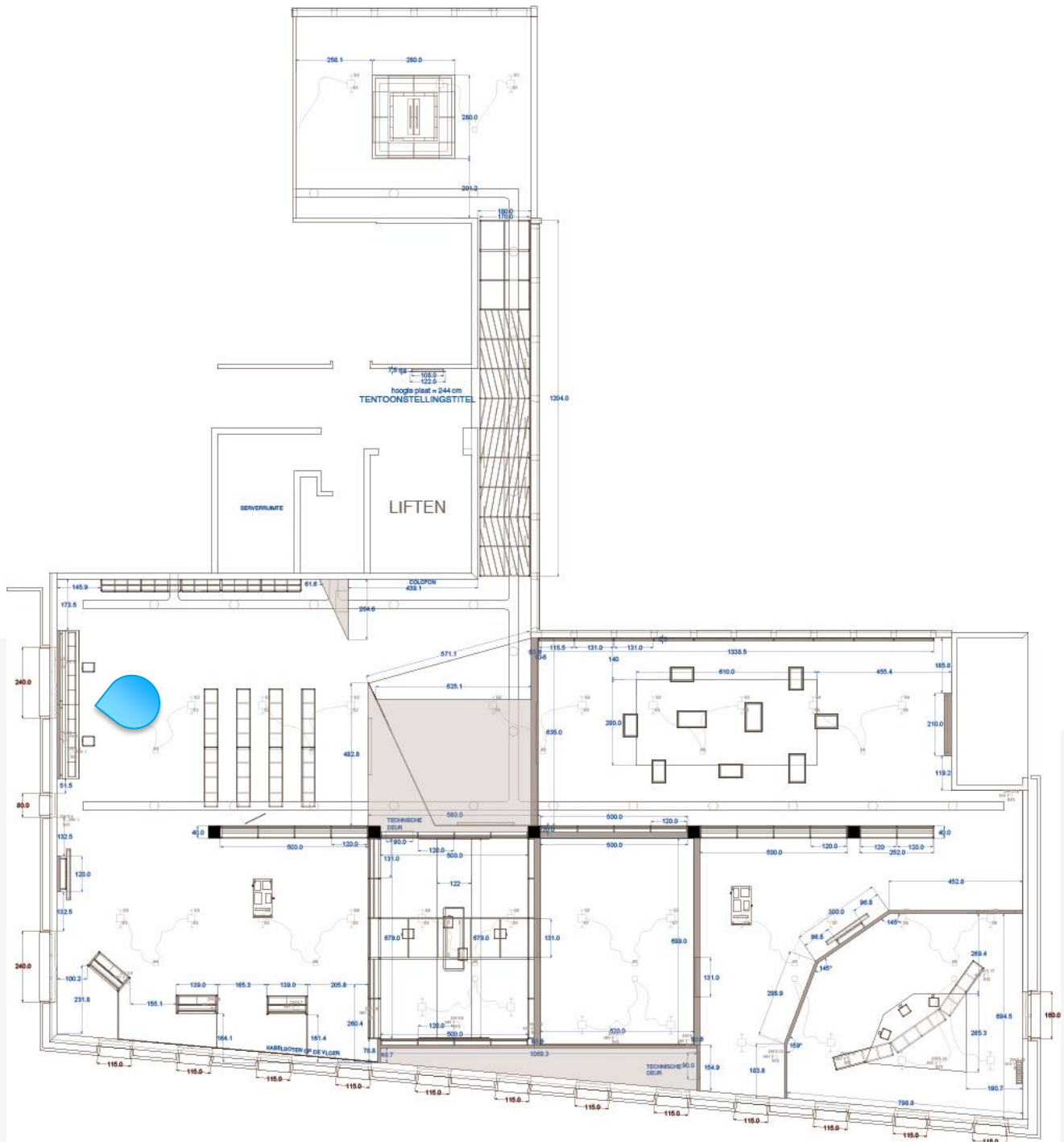


The Mosaic I & II





The perspectum





The source

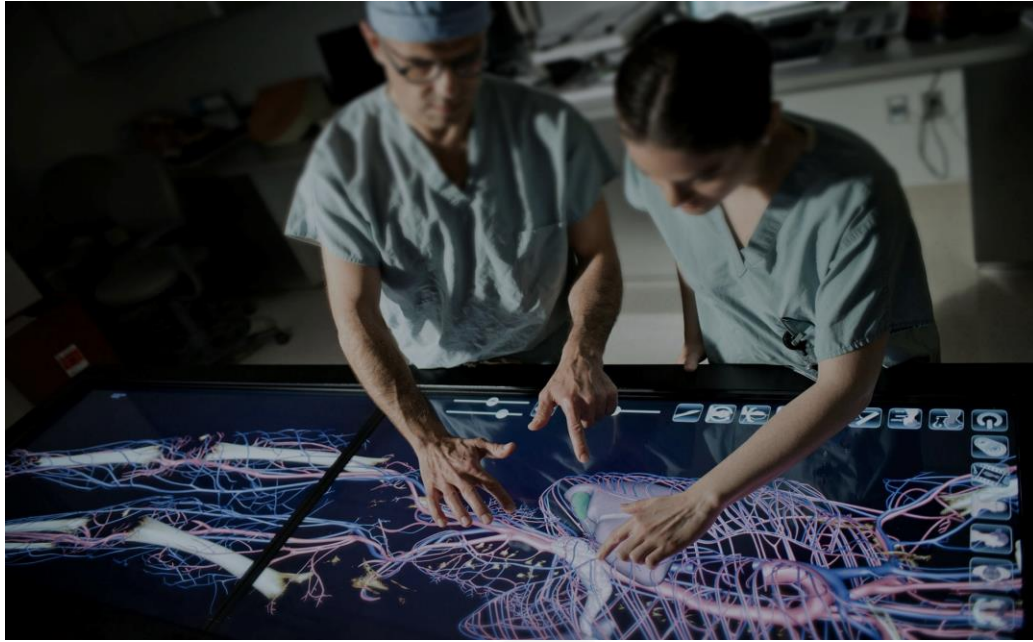






The demo room

# Anatomage Table in medical applications



# VR/AR in medical applications



# Kinect in medical applications



# What could be in for you?

Let's start thinking from who you would like to engage with in a unique, inspiring & innovative manner!





**health  
house**  
EXPERIENCE THE FUTURE

# We are Health House

Health House opens up new horizons in health technology by uniting health, high-tech and all the people around it. Providing hands-on interaction with cutting-edge technology and inspiration for research, business, and cooperations. Health House will turn every visit into a unique experience.



[Read more](#)

[www.health-house.be](http://www.health-house.be)

# CONTACT



**An Tanghe, phd**

**MANAGING DIRECTOR**

Arenberg Sciencepark  
Gaston Geenslaan 11 | B4  
3001 Heverlee

**T** 0478 78 90 53

**E** [an.tanghe@health-house.be](mailto:an.tanghe@health-house.be)

**WWW.HEALTH-HOUSE.BE**

